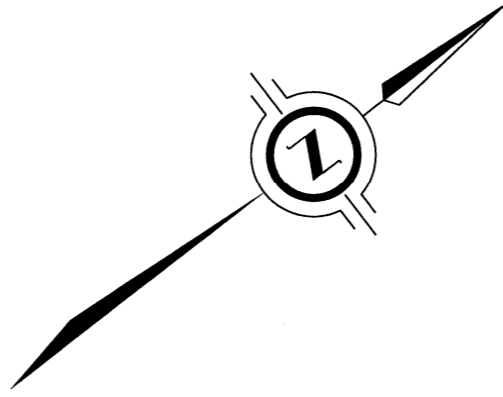

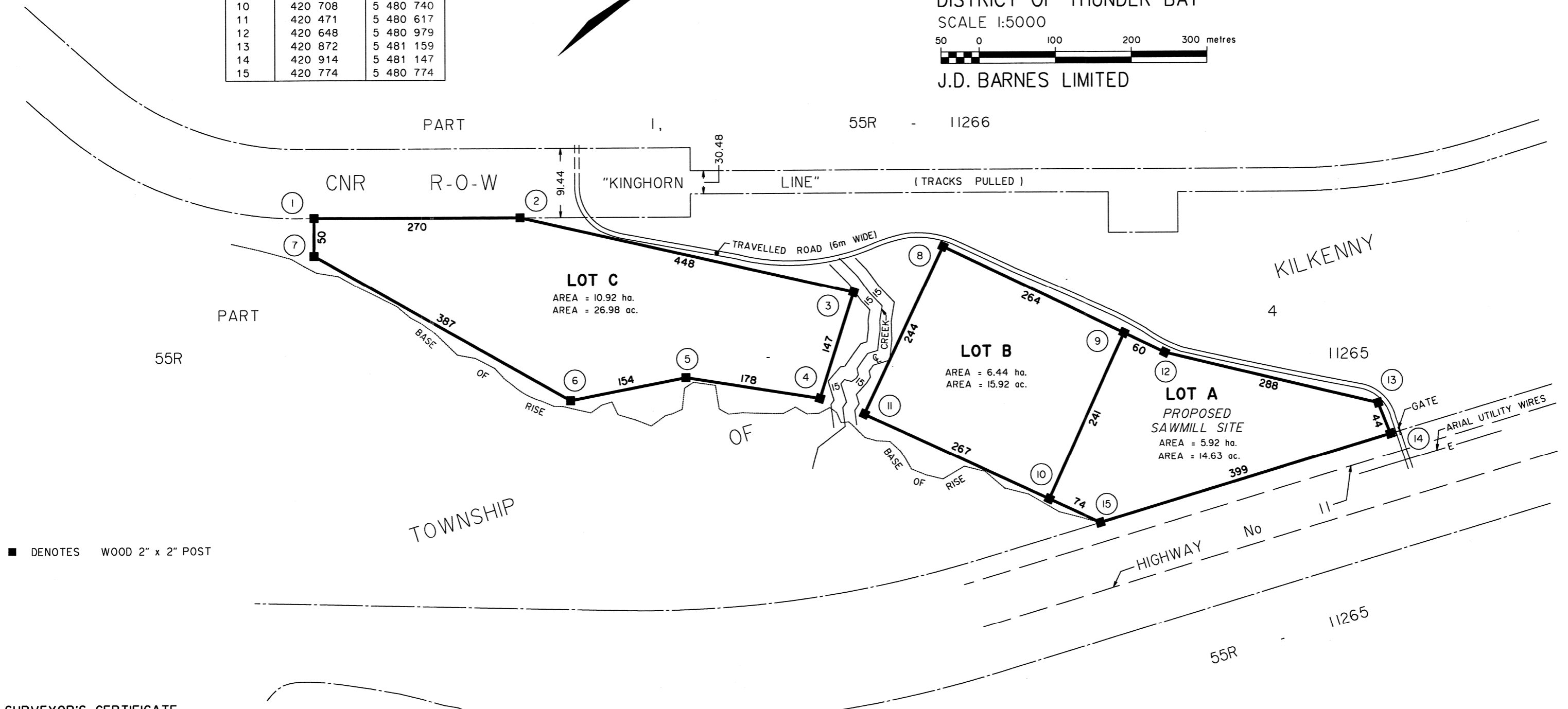


COORDINATE LIST		
POINT	EASTING	NORTHING
1	419 825	5 480 204
2	419 989	5 480 419
3	420 335	5 480 704
4	420 420	5 480 583
5	420 290	5 480 461
6	420 221	5 480 323
7	419 864	5 480 173
8	420 359	5 480 833
9	420 595	5 480 952
10	420 708	5 480 740
11	420 471	5 480 617
12	420 648	5 480 979
13	420 872	5 481 159
14	420 914	5 481 147
15	420 774	5 480 774



SITE PLAN OF  
**PROPOSED INDUSTRIAL PARK**  
 ON PART OF  
**BINGWI NEYAASHI ANISHINAABEK RESERVE #196**  
 GEOGRAPHIC TOWNSHIP OF KILKENNY  
 MUNICIPALITY OF GREENSTONE  
 DISTRICT OF THUNDER BAY  
 SCALE 1:5000  
  
 J.D. BARNES LIMITED



■ DENOTES WOOD 2" x 2" POST

**SURVEYOR'S CERTIFICATE**

I CERTIFY THAT:  
 THE FIELD WORK FOR THIS SITE PLAN WAS  
 COMPLETED ON THE 2ND DAY OF MARCH, 2011.

MARCH 8, 2011  
 DATE

*Peter de Haan*  
 PETER de HAAN  
 ONTARIO LAND SURVEYOR

LEONARD LAKE

**METRIC** DISTANCES AND/OR COORDINATES SHOWN ON THIS PLAN ARE IN METRES AND CAN BE CONVERTED TO FEET BY DIVIDING BY 0.3048.

 <b>J.D. BARNES</b> LIMITED LAND INFORMATION SPECIALISTS 1001 WILLIAM STREET, SUITE 102A, THUNDER BAY, ON P7B 6M1 T: (807) 622-6277 F: (807) 626-8040 www.jdbarnes.com	SURVEYING PLANNING MAPPING GIS	KJ DRAWN PdeH CHECKED DATED: 03/08/11 Ref. No. 11-32-676-01
---	---	--

PLOTTED 08 MAR 2011 g:\13267601\calcs\676-01sketch.dgn